



UNIVERSITY OF
SOUTH CAROLINA

Columbia, SC

SUMWALT COLLEGE LABORATORY RENOVATIONS

State Project #H27-6098-FW

GMK Project #12044.02

December 20, 2013

CONSTRUCTION DOCUMENTS

Prepared by:



Design/Planning/Construction
1201 Main Street

Columbia, South Carolina 29201-3299
tel. 803-256-0000 fax 803-255-7243

DRAWING INDEX

STRUCTURAL

S1.01 ROOF MODIFICATION PLAN

ARCHITECTURAL

CF1 CODE DATA AND THIRD FLOOR LIFE SAFETY PLAN
A1.2 PARTIAL SECOND FLOOR DEMOLITION PLAN
A1.3 PARTIAL THIRD FLOOR DEMOLITION PLAN
A2.3 PARTIAL SECOND AND THIRD FLOOR RENOVATION PLANS
A2.3.1 ENLARGED EQUIPMENT LAYOUT PLANS
A2.4 PARTIAL ROOF RENOVATION PLAN
A4.0 WALL SECTIONS AND DETAILS, ROOF DETAILS, PIPE ENCLOSURE DETAILS
A6.0 INTERIOR ELEVATIONS
A7.2 PARTIAL SECOND FLOOR REFLECTED CEILING PLAN
A7.3 PARTIAL THIRD FLOOR REFLECTED CEILING PLAN, SEISMIC CEILING DETAILS
A8.0 DOOR SCHEDULE, DOOR AND FRAME TYPES AND DETAILS, PARTITION TYPES, FINISH SCHEDULE
A8.0 MILLWORK DETAILS

PLUMBING

P0.0 PLUMBING NOTES, LEGEND, ABBREVIATIONS, AND SCHEDULES
P1.3 PARTIAL SECOND AND THIRD FLOOR PLUMBING DEMOLITION PLANS
P2.1 PARTIAL FIRST FLOOR PLAN PLUMBING RENOVATION
P2.2 PARTIAL SECOND FLOOR PLAN PLUMBING RENOVATION
P2.3 PARTIAL THIRD FLOOR PLAN PLUMBING RENOVATION
P6.1 PLUMBING DETAILS

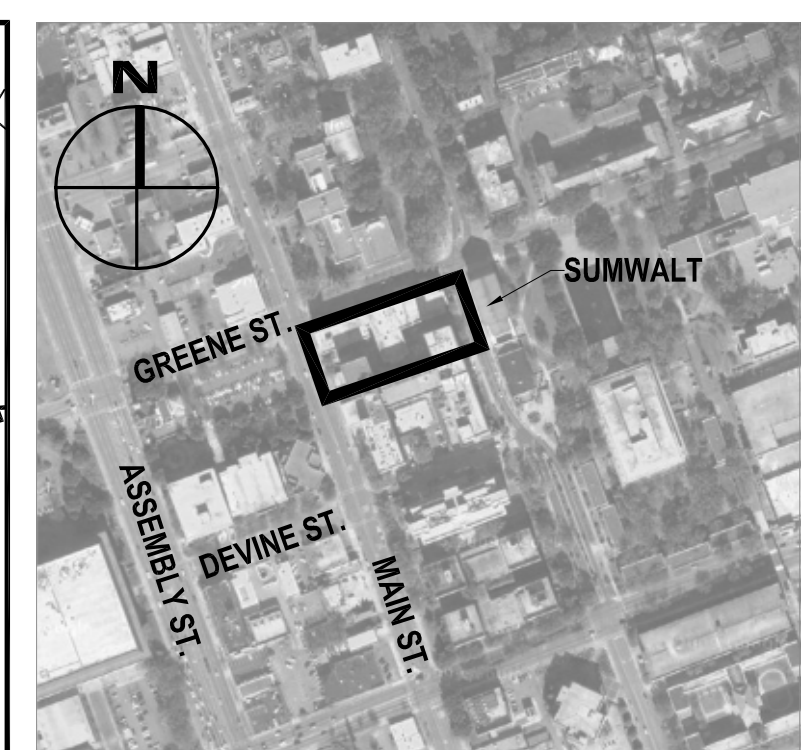
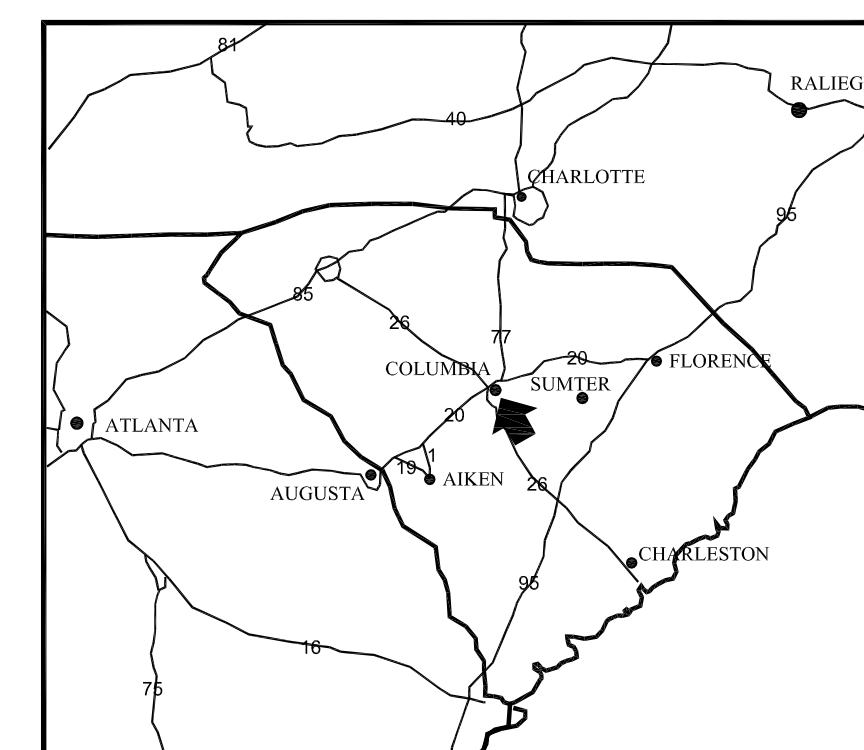
MECHANICAL

M2.3 PARTIAL FIRST AND THIRD FLOOR PLANS - HVAC DEMOLITION AND RENOVATION
M2.4 PARTIAL ROOF PLAN - HVAC DEMOLITION AND RENOVATION
M6.1 HVAC CONTROL SCHEMATICS
M6.1 HVAC DETAILS
M6.2 HVAC DETAILS
M7.1 HVAC LEGENDS, ABBREVIATIONS, NOTES AND SCHEDULES
M7.2 HVAC SCHEDULES ALTERNATE NO. 1

ELECTRICAL

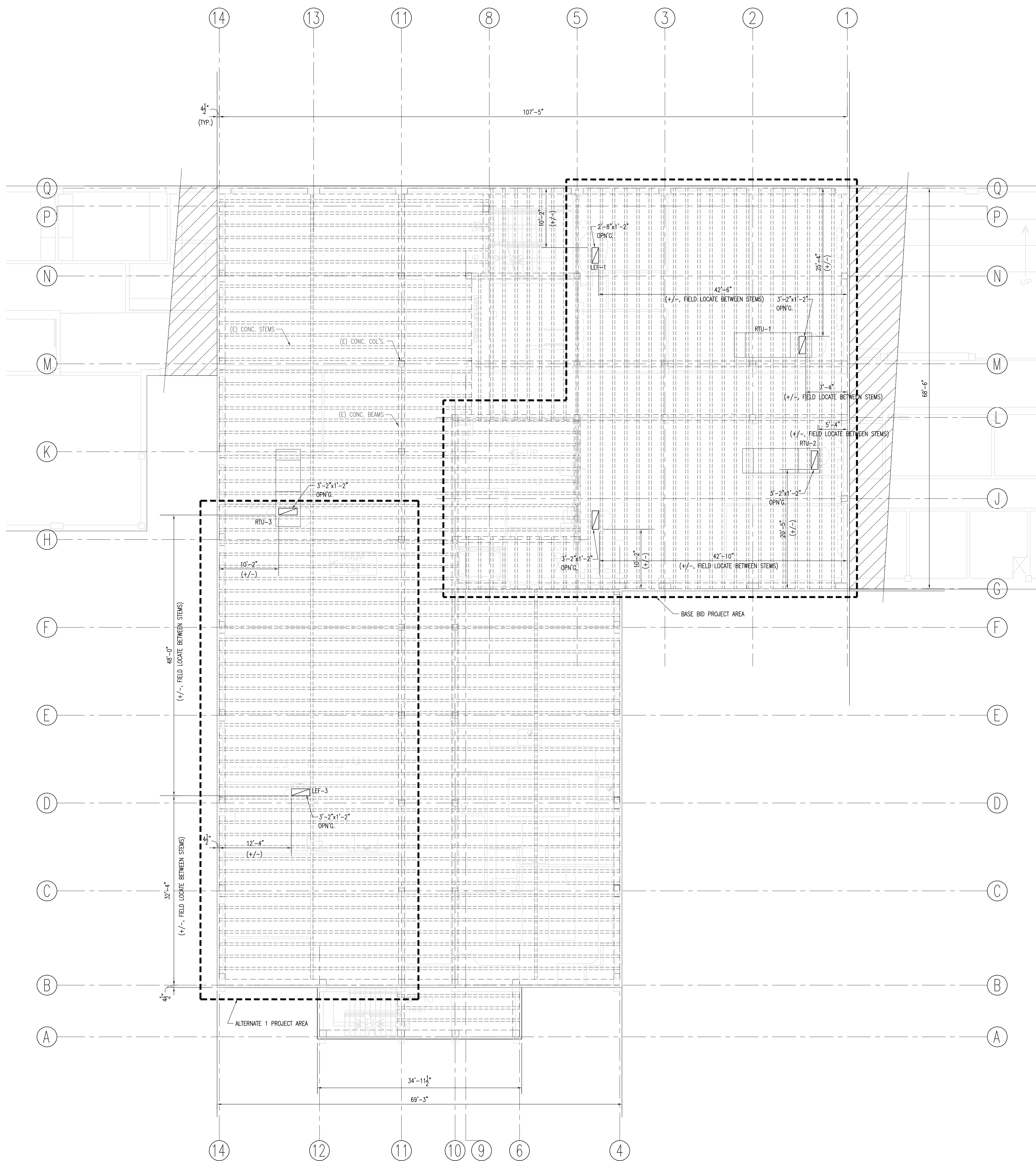
E0.0 ELECTRICAL SYMBOLS, SCHEDULES AND DETAILS
E1.2 PARTIAL SECOND FLOOR DEMOLITION PLAN
E1.3 PARTIAL THIRD FLOOR DEMOLITION PLAN
E2.3 PARTIAL THIRD FLOOR LIGHTING RENOVATION PLAN
E3.2 PARTIAL FIRST AND SECOND FLOOR RENOVATION PLANS
E3.3 ENLARGED PARTIAL THIRD FLOOR RENOVATION PLAN
E3.4 PARTIAL ROOF DEMOLITION AND POWER PLANS

KEY PLAN

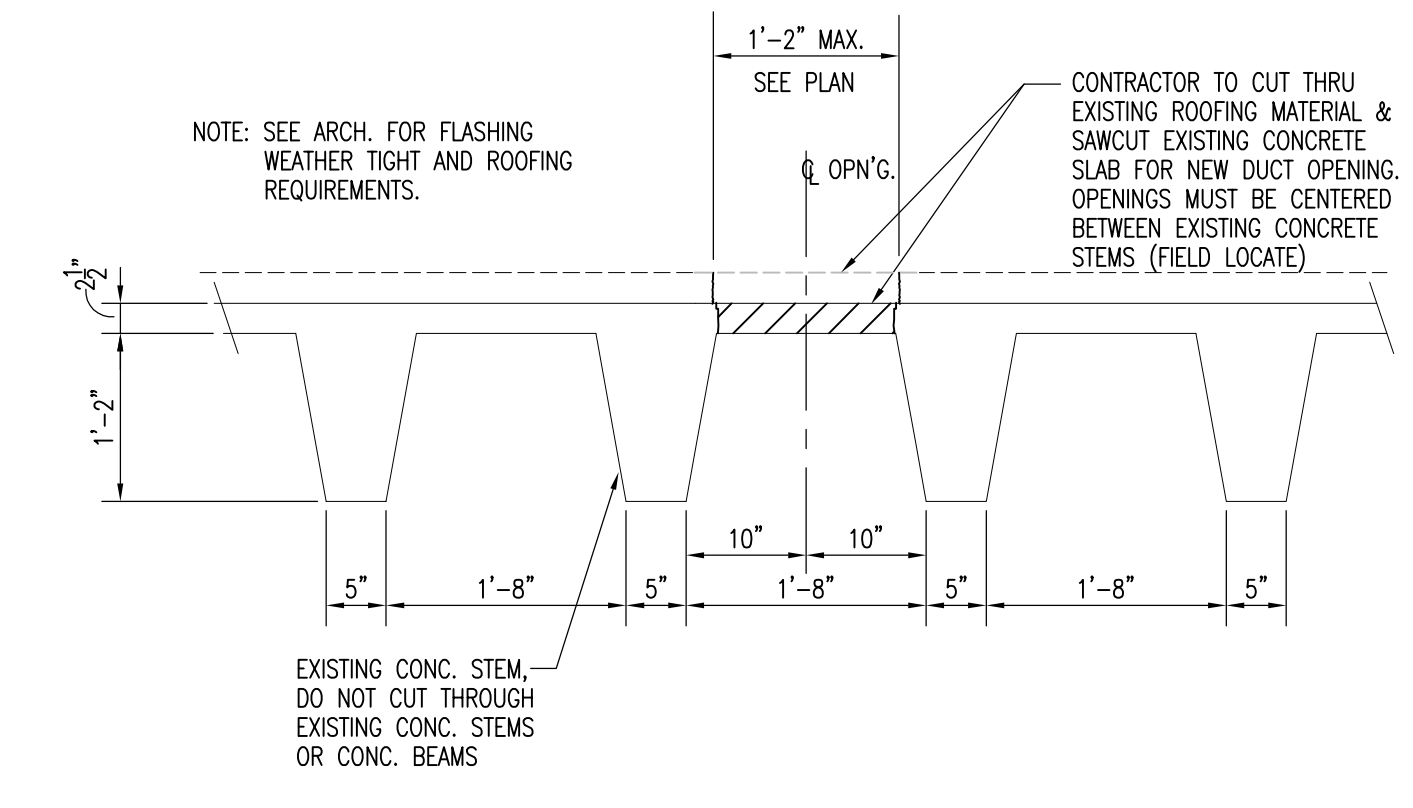


SET NO. _____

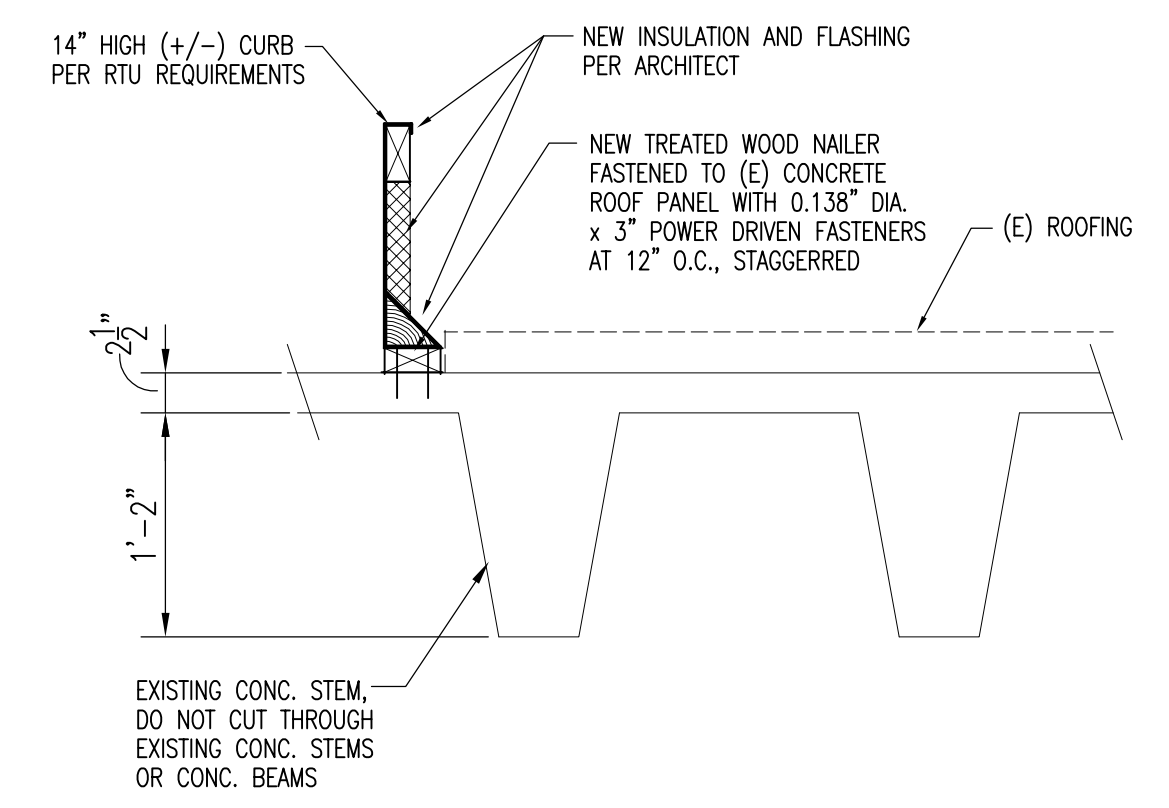
THIS DRAWING AS AN INSTRUMENT OF SERVICE SHALL NOT BE REPRODUCED, ALTERED OR REUSED IN WHOLE OR IN PART WITHOUT THE WRITTEN PERMISSION OF THE ENGINEER. ENGINEERING DRAWINGS ARE PROTECTED BY THE U.S. GOVERNMENT COPYRIGHT LEGISLATION. © COPYRIGHT 2013. CMC CARY ENGINEERING. ALL RIGHTS RESERVED.



1
S1.01 **ROOF OPENING PLAN**
SCALE : 1/8" = 1'-0"



2
S1.01 **SECTION THRU NEW ROOF OPN'G.**
SCALE : 3/4" = 1'-0"



A
S1.01 **NEW RTU CURB DETAIL**
SCALE : 1" = 1'-0"

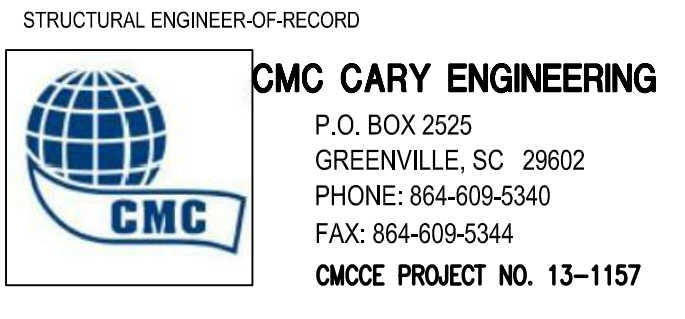
01000 GENERAL NOTES:

- The Structural Engineer-Of-Record, CMC Cary Engineering, shall not be responsible for the means, methods, techniques, sequences, nor procedures of construction selected by the Contractor, or the safety precautions and programs incidental to the work of the Contractor. The Structural Engineer shall not be responsible for the failure of the Contractor to perform the construction work in accordance with these drawings.
- The Contractor shall verify existing conditions and dimensions and notify the Structural Engineer of any discrepancies prior to fabrication and construction.
- The Contractor shall inform the Structural Engineer, clearly and explicitly in writing, of any deviation or substitution of requirements of the contract documents. Contractor is responsible for coordinating all dimensions shown on the contract documents. Inconsistencies on the Structural drawings or between the Structural drawings and any other contract, shop, fabrication, or other drawings or information shall be brought to the attention of the Structural Engineer prior to proceeding with affected work.
- Sections and details are shown to indicate specific conditions. Where sections and details are noted to be typical, these sections or details shall apply to other similar locations. Any location in question shall be brought to the attention of the Structural Engineer.

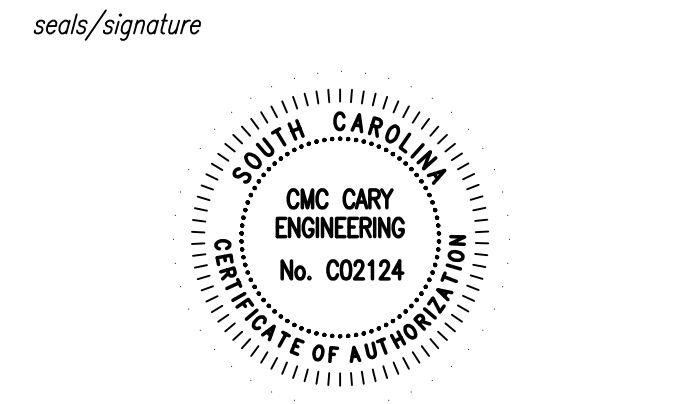


Design/Planning/Construction
1201 Main Street, Suite 2100
Columbia, S.C. 29201
tel. 803-256-0000
fax 803-255-7243

ALL RIGHTS RESERVED. THIS DRAWING AND THE DESIGN SHOWN THEREON ARE COPYRIGHTED AS PRESCRIBED BY THE LAWS OF THE UNITED STATES AND ARE THE PROPERTY OF GMK ASSOCIATES ARCHITECTURAL DIVISION. ANYONE DUPLICATING, REPRODUCING OR CAUSING TO BE REPRODUCED THE WHOLE OR PART OF THESE DRAWINGS OR THE DESIGN THEREON WITHOUT PERMISSION OF THE ARCHITECT WILL BE SUBJECT TO LEGAL ACTION.



project name
**SUMWALT COLLEGE
LABORATORY RENOVATIONS**
State project number
H27-6098-FW
project number
12044.02



issued for
CONSTRUCTION DOCUMENTS

date
DECEMBER 20, 2013

number	item	date

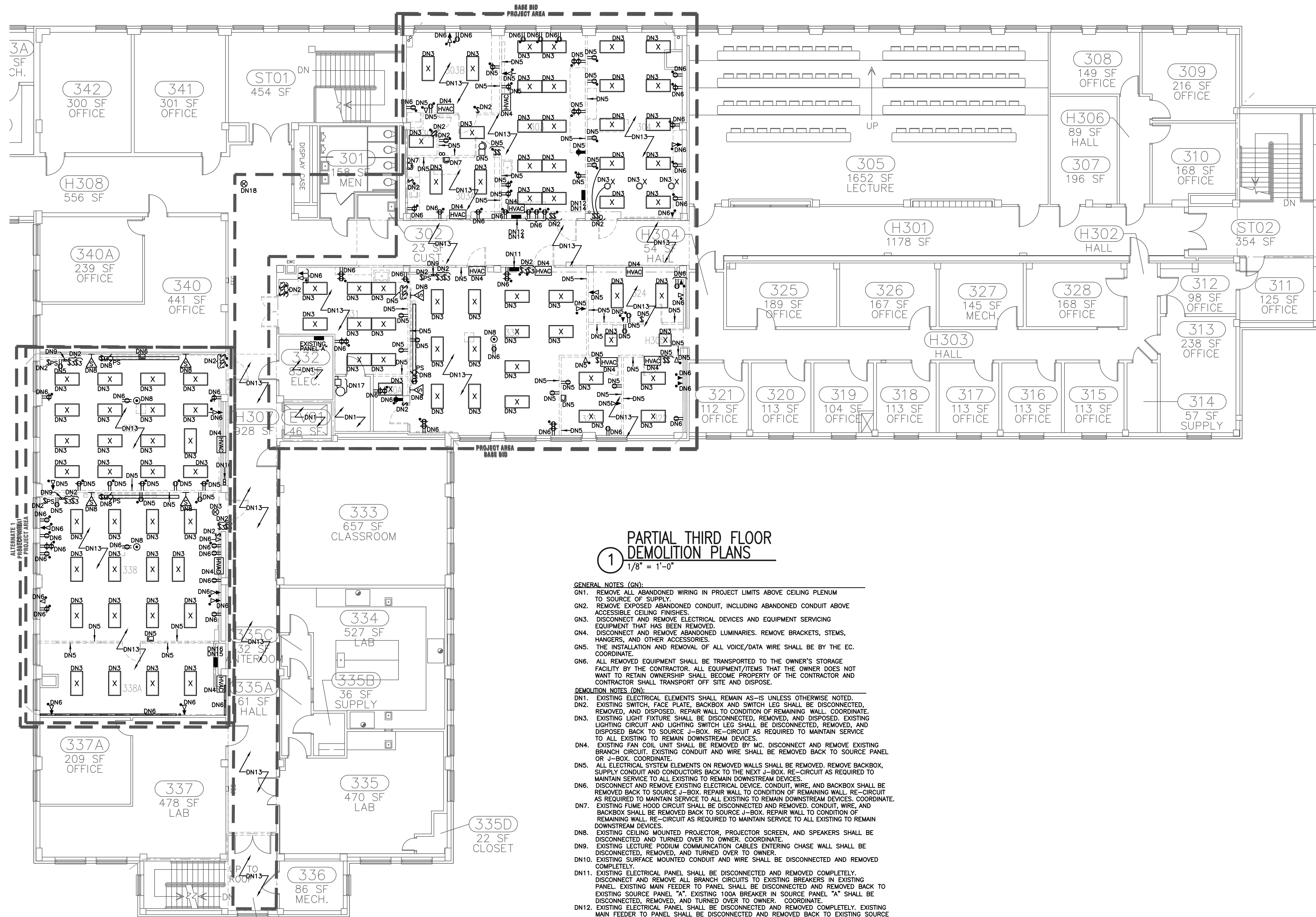
key plan



sheet title
**ROOF
MODIFICATION
PLAN**

sheet number
S1.01

drawn by D. DANN
checked by D. HOLINGSWORTH



**1 PARTIAL THIRD FLOOR
DEMOLITION PLANS**
1/8" = 1'-0"

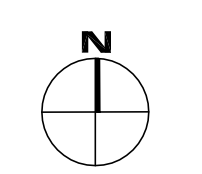
- GENERAL NOTES (GN):**
- GN1. REMOVE ALL ABANDONED WIRING IN PROJECT LIMITS ABOVE CEILING PLENUM TO SOURCE OF SUPPLY.
 - GN2. REMOVE EXPOSED ABANDONED CONDUIT, INCLUDING ABANDONED CONDUIT ABOVE ACCESSIBLE CEILING FINISHES.
 - GN3. DISCONNECT AND REMOVE ELECTRICAL DEVICES AND EQUIPMENT SERVING EQUIPMENT THAT HAS BEEN REMOVED.
 - GN4. DISCONNECT AND REMOVE ABANDONED LUMINAIRES, REMOVE BRACKETS, STEMS, HANGERS, AND OTHER ACCESSORIES.
 - GN5. THE INSTALLATION AND REMOVAL OF ALL VOICE/DATA WIRE SHALL BE BY THE EC COORDINATE.
 - GN6. ALL REMOVED EQUIPMENT SHALL BE TRANSPORTED TO THE OWNER'S STORAGE FACILITY BY THE CONTRACTOR. ALL EQUIPMENT/ITEMS THAT THE OWNER DOES NOT WANT TO RETAIN OWNERSHIP SHALL BECOME PROPERTY OF THE CONTRACTOR AND CONTRACTOR SHALL TRANSPORT OFF SITE AND DISPOSE.
- DEMOLITION NOTES (DN):**
- DN1. EXISTING ELECTRICAL ELEMENTS SHALL REMAIN AS-IS UNLESS OTHERWISE NOTED.
 - DN2. EXISTING SWITCH, FACE PLATE, BACKBOX AND SWITCH LEG SHALL BE DISCONNECTED, REMOVED, AND DISPOSED. REPAIR WALL TO CONDITION OF REMAINING WALL. COORDINATE.
 - DN3. EXISTING LIGHT FIXTURE SHALL BE DISCONNECTED, REMOVED, AND DISPOSED. EXISTING LIGHTING CIRCUIT AND LIGHTING SWITCH LEG SHALL BE DISCONNECTED, REMOVED, AND DISPOSED BACK TO SOURCE J-BOX. RE-CIRCUIT AS REQUIRED TO MAINTAIN SERVICE TO ALL EXISTING TO REMAIN DOWNSTREAM DEVICES.
 - DN4. EXISTING FAN COIL UNIT SHALL BE REMOVED BY MC. DISCONNECT AND REMOVE EXISTING BRANCH CIRCUIT. EXISTING CONDUIT AND WIRE SHALL BE REMOVED BACK TO SOURCE PANEL OR J-BOX. COORDINATE.
 - DN5. ALL ELECTRICAL SYSTEM ELEMENTS ON REMOVED WALLS SHALL BE REMOVED. REMOVE BACKBOX, SUPPLY CONDUIT AND CONDUCTORS BACK TO THE NEXT J-BOX. RE-CIRCUIT AS REQUIRED TO MAINTAIN SERVICE TO ALL EXISTING TO REMAIN DOWNSTREAM DEVICES.
 - DN6. DISCONNECT AND REMOVE EXISTING ELECTRICAL DEVICE, CONDUIT, WIRE, AND BACKBOX SHALL BE REMOVED BACK TO SOURCE J-BOX. REPAIR WALL TO CONDITION OF REMAINING WALL. RE-CIRCUIT AS REQUIRED TO MAINTAIN SERVICE TO ALL EXISTING TO REMAIN DOWNSTREAM DEVICES. COORDINATE.
 - DN7. EXISTING FUME HOOD CIRCUIT SHALL BE DISCONNECTED AND REMOVED. CONDUIT, WIRE, AND BACKBOX SHALL BE REMOVED BACK TO SOURCE J-BOX. REPAIR WALL TO CONDITION OF REMAINING WALL. RE-CIRCUIT AS REQUIRED TO MAINTAIN SERVICE TO ALL EXISTING TO REMAIN DOWNSTREAM DEVICES.
 - DN8. EXISTING CEILING MOUNTED PROJECTOR, PROJECTOR SCREEN, AND SPEAKERS SHALL BE DISCONNECTED AND TURNED OVER TO OWNER. COORDINATE.
 - DN9. EXISTING LECTURE PODIUM COMMUNICATION CABLES ENTERING CHASE WALL SHALL BE DISCONNECTED, REMOVED, AND TURNED OVER TO OWNER.
 - DN10. EXISTING SURFACE MOUNTED CONDUIT AND WIRE SHALL BE DISCONNECTED AND REMOVED COMPLETELY.
 - DN11. EXISTING ELECTRICAL PANEL SHALL BE DISCONNECTED AND REMOVED COMPLETELY. DISCONNECT AND REMOVE ALL BRANCH CIRCUITS TO EXISTING BREAKERS IN EXISTING PANEL. EXISTING MAIN FEEDER TO PANEL SHALL BE DISCONNECTED AND REMOVED BACK TO EXISTING SOURCE PANEL "A". EXISTING 100A BREAKER IN SOURCE PANEL "A" SHALL BE DISCONNECTED, REMOVED, AND TURNED OVER TO OWNER. COORDINATE.
 - DN12. EXISTING ELECTRICAL PANEL SHALL BE DISCONNECTED AND REMOVED COMPLETELY. EXISTING MAIN FEEDER TO PANEL SHALL BE DISCONNECTED AND REMOVED BACK TO EXISTING SOURCE PANEL "A". MARK EXISTING BREAKER IN SOURCE PANEL "A" AS SPARE.
 - DN13. ALL EXISTING LIGHT FIXTURES AND CEILING MOUNTED ELECTRICAL DEVICES IN EXISTING SPACE SHALL BE DISCONNECTED, REMOVED, AND STORED FOR REINSTALLATION OR SHALL BE PROTECTED AND SECURED DURING CONSTRUCTION AS NECESSARY. DETERMINE EXTENT OF ALL DEMOLITION FROM FIELD INSPECTION. COORDINATE WITH MECHANICAL AND PLUMBING CONTRACTOR TO DETERMINE EXACT AREAS OF REMOVAL.
 - DN14. DISCONNECT AND REMOVE ALL BRANCH CIRCUITS TO EXISTING DEVICES IN PROJECT LIMITS. EXISTING BRANCH CIRCUITS TO EXISTING DEVICES OUTSIDE OF PROJECT LIMITS SHALL BE RE-CIRCUITED TO PANEL "A1". SEE PANEL "A1" LOCATION SHEET E3.3. COORDINATE.
 - DN15. EXISTING ELECTRICAL PANELS SHALL BE DISCONNECTED AND REMOVED COMPLETELY. EXISTING MAIN SUPPLY FEEDER TO PANEL SHALL BE DISCONNECTED AND REMOVED BACK TO EXISTING 2ND FLOOR SOURCE PANEL "B". MARK EXISTING BREAKER IN SOURCE PANEL "B" AS SPARE. SEE SHEET E1.2 FOR EXISTING SOURCE PANEL "B" LOCATION.
 - DN16. DISCONNECT AND REMOVE ALL BRANCH CIRCUITS TO EXISTING DEVICES IN PROJECT LIMITS. EXISTING BRANCH CIRCUITS TO EXISTING DEVICES OUTSIDE OF PROJECT LIMITS SHALL BE RE-CIRCUITED TO PANEL "A1". SEE PANEL "A1" LOCATION SHEET E3.3. COORDINATE.
 - DN17. EXISTING WATER HEATER CIRCUIT SHALL BE DISCONNECTED AND REMOVED COMPLETELY. CONDUIT, WIRE AND BACKBOX SHALL BE REMOVED BACK TO SOURCE J-BOX OR PANEL.
 - DN18. DISCONNECT AND REMOVE EXISTING EXIT LIGHT. EXISTING EXIT LIGHT CIRCUIT SHALL REMAIN AND BE EXTENDED AS REQUIRED TO NEW EXIT LIGHT FIXTURE AS SHOWN ON SHEET E2.4. COORDINATE.

issued for
CONSTRUCTION DOCUMENTS

date
DECEMBER 20, 2013

number	item	date

key plan



sheet title
**PARTIAL THIRD
FLOOR DEMOLITION
PLAN**

sheet number

E1.3

drawn by TLK
checked by JBF

